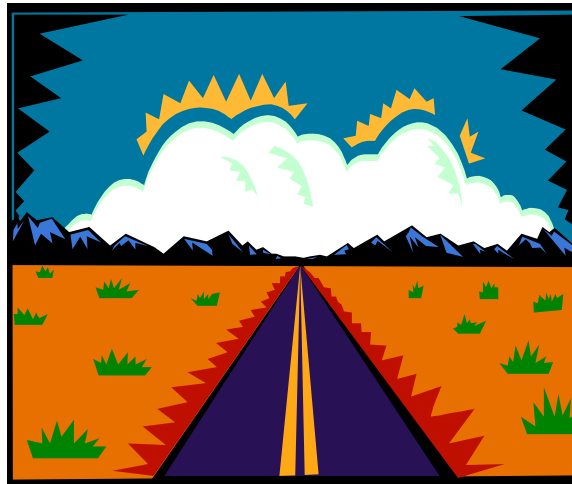


# TRANSPORTATION



**A network of 6 primary highways intersect with Interstate 40, the State's major east-west route.**

## Highways

The North Carolina Department of Transportation has planned for significant improvements to Duplin County's highway system over the next several years. Duplin County is served by approximately 30 miles of Interstate Highway.

Major highways throughout Duplin County are Interstate 40, U.S. 117, N.C. 11, 24, 41, 50, 111, 241, 403 and 903.

The 1996 Transportation Improvement Program (TIP), published by the North Carolina Department of Transportation, identified Interstate 40 as a "strategic corridor". This designation is assigned to highways with high traffic volumes and important economic significance to the region and state. Extension of I-40 from the State Port at Wilmington, North Carolina to Barstow, California, gives it great national recognition.

NC 24 and NC 11 are designated as "critical connectors" to eastern North Carolina. These routes provide access to the state's strategic corridors.

The segment of NC 24 connecting I-40 to I-95 near Fayetteville is scheduled for construction beginning in 2011. Widening this portion of NC 24 will give Duplin County rapid access to I-95, the Eastern United States major north/south route.

NC 11 is scheduled to be widened to four lanes from Kinston to I-40 near Kenansville. Construction has begun on the portion in Lenoir County. Completion of this project will provide a four-lane route from Greenville and Kinston to I-40 at Kenansville.

With highway improvements providing four-lane access to the major regional population centers, State Port facilities at Wilmington and Morehead City; military installation at Jacksonville, Fayetteville, and Goldsboro; and the major north/south artery serving the East Coast, Duplin County is developing into the transportation and distribution hub of Eastern North Carolina.

**Duplin County  
Proposed Highway Improvements  
2009-2015**

<b>Route</b>	<b>Location</b>	<b>Description</b>	<b>Begin Construction</b>	<b>Complete Construction</b>
NC 11	From NC 24 at Kenansville to NC 11 North of Pink Hill	Widen existing roadway to four lanes, with bypass of Pink Hill	2011	2014
NC 24	From I-40 at Warsaw to I-95 East of Fayetteville	Widen existing roadway to four lanes on new location	2010	2015
NC 41	From NC 11 at Tin City to I-40	Widen existing roadway to multi-lanes	2009	2010
NC 41	From NC 24 at Beulaville to I-40 near Wallace	Widen roadway to 24 feet with turn lanes and realignment at various locations	2009	2012

Source: NC Dept. Of Transportation  
Improvement Program 2009-2015

## General Aviation Airports

### Duplin County Airport

LOCATION: 260 Airport Road (NCSR #1398) – three miles northwest of Kenansville

FACILITIES: 6,002 X 75 ft. asphalt lighted runway with radio beacon, rotating beacon, GPS & localizer approaches, Pilot Controlled Lighting, Unicom, GCO remote, AWOS, PAPI system, & REIL's Rwy 23 & 05, terminal building, conference room facilities, 17 space concrete apron, and hangars.

SERVICES: Public use, public access air service facility with FAA approved instrument landing systems, tie down, aviation gasoline and jet fuel, auxiliary power unit, courtesy car, catering and accommodation arrangements, 24-hour self service fuel available.

PLANNED IMPROVEMENTS: Runway widening/overlay, terminal area development

HOURS: Monday – Saturday 7:00 a.m. – 7:00 p.m. EDST  
8:00 a.m. – 6:00 p.m. EST  
Sunday 1:00 p.m. – 7:00 p.m. EDST  
1:00 p.m. – 6:00 p.m. EST  
\*Other times by appointment

TELEPHONE: 910-296-2188

FAX: 910-296-2184

EMAIL: [duplinair@duplincountync.com](mailto:duplinair@duplincountync.com)

### Henderson Field Airport

LOCATION: Boney Bridge Road (NCSR # 1307) – southwest of Wallace

FACILITIES: 4,000 feet lighted runway with radio beacon, rotating beacon, VASI system, terminal building and hangars.

SERVICES: Tie down, aviation fuel – 100-octane gasoline & jet fuel available 24 hours self service, radar vectoring by Wilmington Flight Service.

PLANNED IMPROVEMENTS: Extend runway

HOURS: Sunday – Saturday 7:00 a.m. – 7:00 p.m. EDST  
7:30 a.m. – 5:30 p.m. EST  
\*Other times by appointment

TELEPHONE: 910-285-9948 or 910-285-4136

## Commercial Airports

All locations within Duplin County are within a one-hour drive to commercial airports. These locations include: the Eastern Regional Jetport in Kinston, the Wilmington International Airport in New Hanover County and the Albert J. Ellis Airport near Jacksonville.

The Raleigh-Durham International Airport, located approximately one hour away, offers daily flights to major cities, with connecting flights to worldwide destinations. The airport is served by 10 major airlines and 17 regional carriers.

Duplin County is located only one hour from the North Carolina Global Transpark (GTP) facility in Kinston. This facility is planned to be a 15,000-acre, state-of-the-art industrial and fully-intermodal transportation complex that will provide the logistical infrastructure and value-added services essential for a successful 21<sup>st</sup> century manufacturing. Complete air cargo service will be readily accessible for Duplin County.

## Ports

### WILMINGTON PORT

North Carolina's largest deepwater port is located on the Cape Fear River at Wilmington. It provides 6,768 feet of continuous concrete wharf, over 1 million square feet of warehouse space, 100 acres of paved open storage area, bulk and container handling equipment, fumigation facilities, and U.S. Customs clearance. The entire port is designed as a foreign trade zone.

The port is accessible by several major highways: I-40, US 117, US 421, and US 74-76. CSX Transportation Corporation provides direct linkage to Charlotte and connections with major hubs of Atlanta, Chicago, and the West Coast.

### MOREHEAD CITY PORT

The port at Morehead City is located at the mouth of the Newport River at Morehead City. The port provides 5,500 feet of continuous wharf, barge terminals, 457,564 square feet of warehouse space, 14 acres of paved open storage area, bulk handling equipment, fumigation, and U.S. customs clearance.

Two sites are designated as Foreign Trade Zones. Site one, within the main terminal, consists of 190,374 square feet of warehouse space. Site Two is an undeveloped 40-acre tract of land located four miles west of the main port facility.

The Port at Morehead City is accessible by US 70. Rail service is provided by Norfolk-Southern Railroad Corporation connections to New Orleans, Chicago, Kansas City, and Omaha.

## Railroad

CSX Transportation Corporation operates approximately 30 miles of railroad in Duplin County. Piggyback services are available at Goldsboro and at the State Port of Wilmington. Detailed information on routing and switching services is available through CSX and the State Port Authority.

## Motor Freight Carriers

Thirty-seven motor freight carriers serve Duplin County's highway transportation needs. Information on current schedules and routing can be obtained from the individual carriers or through the American Motor Carriers Directory. Some of the carriers that serve Duplin County include:

- CF Motorfreight
- Roadway Express, Inc.
- Nathan Greenstein Truck Brokers
- Jimmy Robinson Truck Brokers
- Going West Transportation

## Motor Passenger Carriers

Duplin County has passenger carriers to serve the needs of the public. They include:

Cardinal Coach, Inc.  
Warsaw, NC  
910-293-7695

Continental Trailways  
Charlotte, NC  
704-527-9393

Piedmont Coach Lines, Inc.  
Jacksonville, NC  
800-232-5477

Carolina Trailways  
Raleigh, NC  
919-833-3601

Greyhound Bus Lines, Inc.  
Goldsboro, NC  
919-734-3811

**Duplin County Transportation Map Here**

**Map link located in the Table of Contents**